

Windows XP Service Pack 2 Firewall

From the Control Panel, click on the Windows Firewall icon. If you do not see the icon, click on the “Switch to Classic View” link.

Click on the “Exceptions” Tab. Next, click on the “Add Port” button

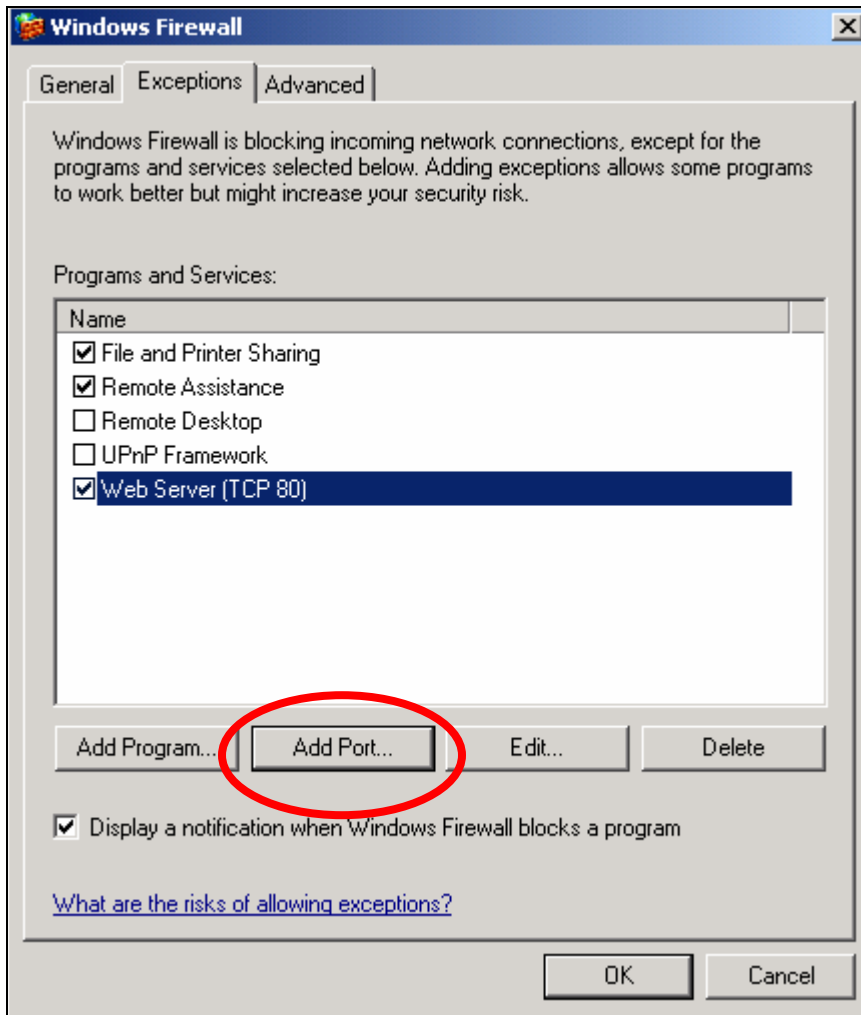


Figure 1: Exceptions Tab

Next, a window will appear. The name of the port should be something descriptive, such as ForexTrader. Next, enter the appropriate port numbers. Consult the Port Number chart supplied below to determine the port numbers. Be sure to select TCP as the protocol type. Add the port numbers one at a time.

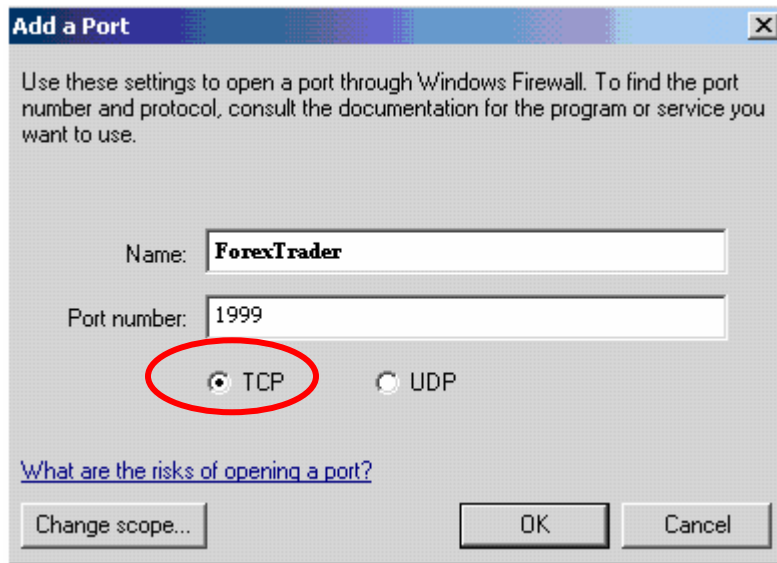


Figure 2: Adding a Port Window

Port Numbers

Java Platform	HTML Platform
1999	900
3020	3020
1000	1000